

TARGET MODULE

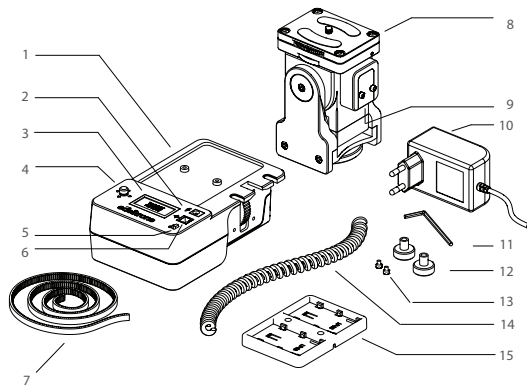
USER'S MANUAL

Before operating your edelkrone,
please watch the users manual video.

TABLE OF CONTENTS

1. WHAT'S IN THE BOX & THE BASICS.
2. MOUNTING YOUR TARGET MODULE TO YOUR SLIDERPLUS
3. TARGET GROUND MODE
4. TARGET TRIPOD MODE
5. PANAROMIC MODE
6. AUTO PAN MODE
7. CAUTIONS AND TIPS

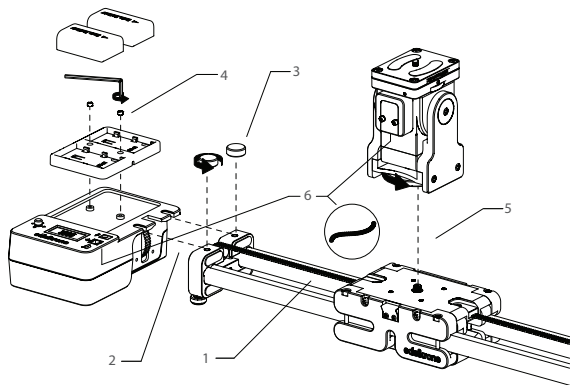
1. WHAT'S IN THE BOX & THE BASICS



- | | | |
|--------------------------|---------------------------|----------------------------|
| 1/ Target Encoder Module | 6/ Data Port | 11/ Allen wrench |
| 2/ DC socket | 7/ Motion control belt | 12/ Attachment screws |
| 3/ Screen | 8/ Target pan/tilt module | 13/ Battery bracket screws |
| 4/ Control button | 9/ Data port | 14/ Data cable |
| 5/ On/Off switch | 10/ AC-DC adaptor* | 15/ Battery bracket |

*The shape of the plug adapter varies with the country or region

2. MOUNTING YOUR TARGET MODULE TO YOUR SLIDERPLUS

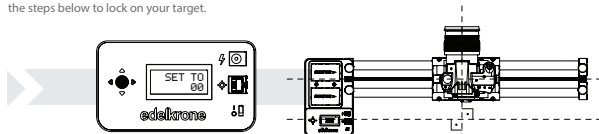


- 1/ Attach the motion control belt. ▶
- 2/ Place the Target Module on the end of the SliderPLUS.
- 3/ Use the thumb screws to tighten the module in place.
- 4/ If the Target Module is going to be powered by batteries, place the battery bracket in its position & attach the screws.
- 5/ Place the Target Pan/Tilt Module in its position and tighten it. (Be sure that data port of the Target Head is placed on the same side as the lock of the SliderPLUS.)
- 6/ Connect the data cable to data ports of the Target Encoder Module and Target Pan/Tilt Module.

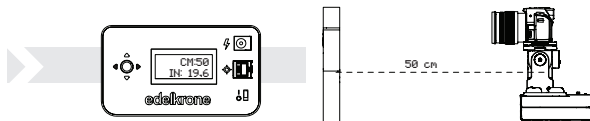
▶ Detailed video explaining how to attach this belt and mounting details can be found from : manuals.edelkrone.com

3. "TARGET GROUND MODE"

In Target Ground Mode you can lock onto your target while using the SliderPLUS on its feet. For this mode, put your SliderPLUS on a flat surface and select the mode by pressing OK, then follow the steps below to lock on your target.



1. Use LEFT/RIGHT buttons to make your lens perpendicular to the slider rails. Then press OK.



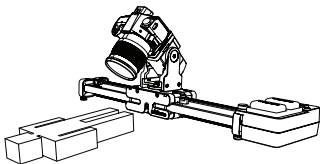
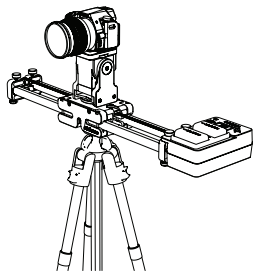
2. Use LEFT/RIGHT buttons to turn the Target Pan/Tilt head to your target. Then use a measurement tool to measure the distance between the Target Head and your target. To enter the distance use UP/DOWN buttons. Then press OK to proceed. While measuring the distance please be sure to measure from the Target Head's middle point as shown in the figure above to get the perfect results.



3. When you see the "TARGET ACTIVE" on the screen you can start your slides. Target Module responds to your slides and it keeps your target in the frame automatically. The speed of the Target Head will depend on the speed of your slide.

4. "TARGET TRIPOD MODE"

SliderPLUS could travel twice its own length when it is mounted on a tripod. That is the only difference between Target Tripod Mode and Target Ground Mode. So while using on a tripod please be sure to follow the same steps with the Target Ground Mode.



Be careful when following objects above or below the horizon. This can cause a Dutch angle.



*Before operating your product, please watch the users manual videos from the link: manuals.edelkrone.com

5. "PANORAMIC MODE"

In Panoramic Mode Target Module will perform a convex movement as shown in the figure. Turn off and turn on the system in order to navigate between modes. Select the Panoramic mode, then follow the steps below. In Panoramic Mode you don't need to make the Target Head perpendicular to the rails of the SliderPLUS.



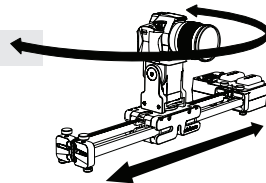
1. Use LEFT/RIGHT buttons to choose your start angle. Then press OK.



2. Use UP/DOWN buttons to set the amount of degrees to turn per centimeter. Use LEFT/RIGHT buttons to change cm to inch.



3. Panoram. slide means system is active now. You can start your slide and the Target Head will turn.



If the value is entered negative, Target Head will turn in the opposite direction.



*Before operating your product, please watch the users manual videos from the link: manuals.edelkrone.com

6. "AUTO PAN MODE"

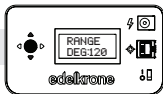
Auto pan mode is not a responsive mode so it could be triggered without sliding your SliderPLUS.



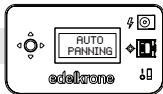
1. Use LEFT/RIGHT buttons to choose your start angle. Then press OK.



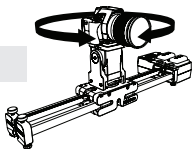
2. Use UP/DOWN buttons to set the amount of degrees of turn for each seconds. Then press OK.



3. Use UP/DOWN buttons to set the range of the turn. Then press OK.

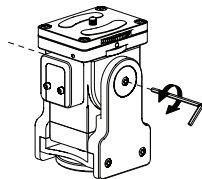


4. It will start panning and let you know once it has completed.

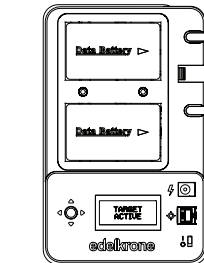
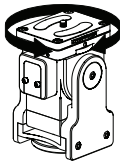


7. CAUTIONS & TIPS

- ⚠ To adjust the tension of the tilt on the Target Head, tighten/loosen the 2 screws on the head as shown below.



- ⚠ Rotating the Target Head manually is not recommended. If you need to rotate please be sure the data cable is unplugged.



- ⚡ Use fully charged batteries or AC-DC adaptor to get better results.
- ⚠ Do not attempt to disassemble to the module to protect your warranty.
- ⚡ Hot swapping : It is possible to change a battery while powering the module with another battery.

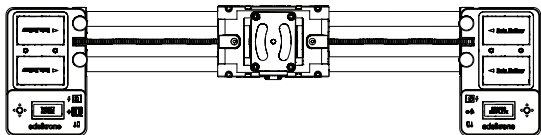
▶ *Before operating your product, please watch the users manual videos from the link: manuals.edelkrone.com

▶ *Before operating your product, please watch the users manual videos from the link: manuals.edelkrone.com



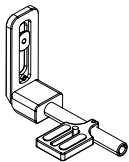
Add On: Action Module

Target Module work great with the Action Module to make super steady shots. Action Module helps the Target keep its position.. This add on is sold separately.



Add On: L Bracket

Target Module has a really important add on called L bracket. Information about L Bracket can be found on its own manual videoses and users manual sheets. This add on is sold separately.



*Before operating your product, please watch the users manual videos from the link: manuals.edelkrone.com

DISPOSAL OF THE PRODUCT



Should the product become damaged beyond repair, or if you wish to dispose it, it must be disposed separately from the municipal waste stream via designated collection facilities appointed by the government or the local authorities. Observe the regulations of your area and country that relate to the disposal of electronic products.

DISCLAIMER

edelkrone cannot be responsible for damage caused by improper use or modification of the product.

- ▶ Keep your electronic Motion Control Unit away from all sorts of liquids.
- ▶ In order to preserve your Motion Control Unit and battery performance at their best, use exact same type of batteries with equivalent level of charge during dual-battery operation.
- ▶ Do not attempt to disassemble or modify any internal parts of your Motion Control Unit. If the device appears to be malfunctioning, discontinue use immediately and contact support for qualified service.
- ▶ Never force a different type of connector into a port.
- ▶ Never use or store your Motion Control Unit in areas subject to extreme temperatures, or high levels of vibration.
- ▶ If your motion control unit becomes unresponsive, disconnect and re-connect the power source. Make sure your AC/DC adapter is plugged in or your batteries are properly charged. If the problem persists, contact our support team.
- ▶ Environmental factors may affect your Motion Control Unit's performance. Keep your product away from environmental hazards such as dust or heavy resonance. Do not use chemical materials to clean your product.
- ▶ Only use included battery plate, AC/DC adapter or equivalent power sources. Use of an inappropriate power source may permanently damage your Motion Control Unit.
- ▶ If there is an impairment on the power or connector cable, stop using the Motion Control Unit immediately.
- ▶ Avoid dropping or causing physical damage to your Motion Control Unit.
- ▶ Do not place heavy objects on top of your Motion Control Unit.